



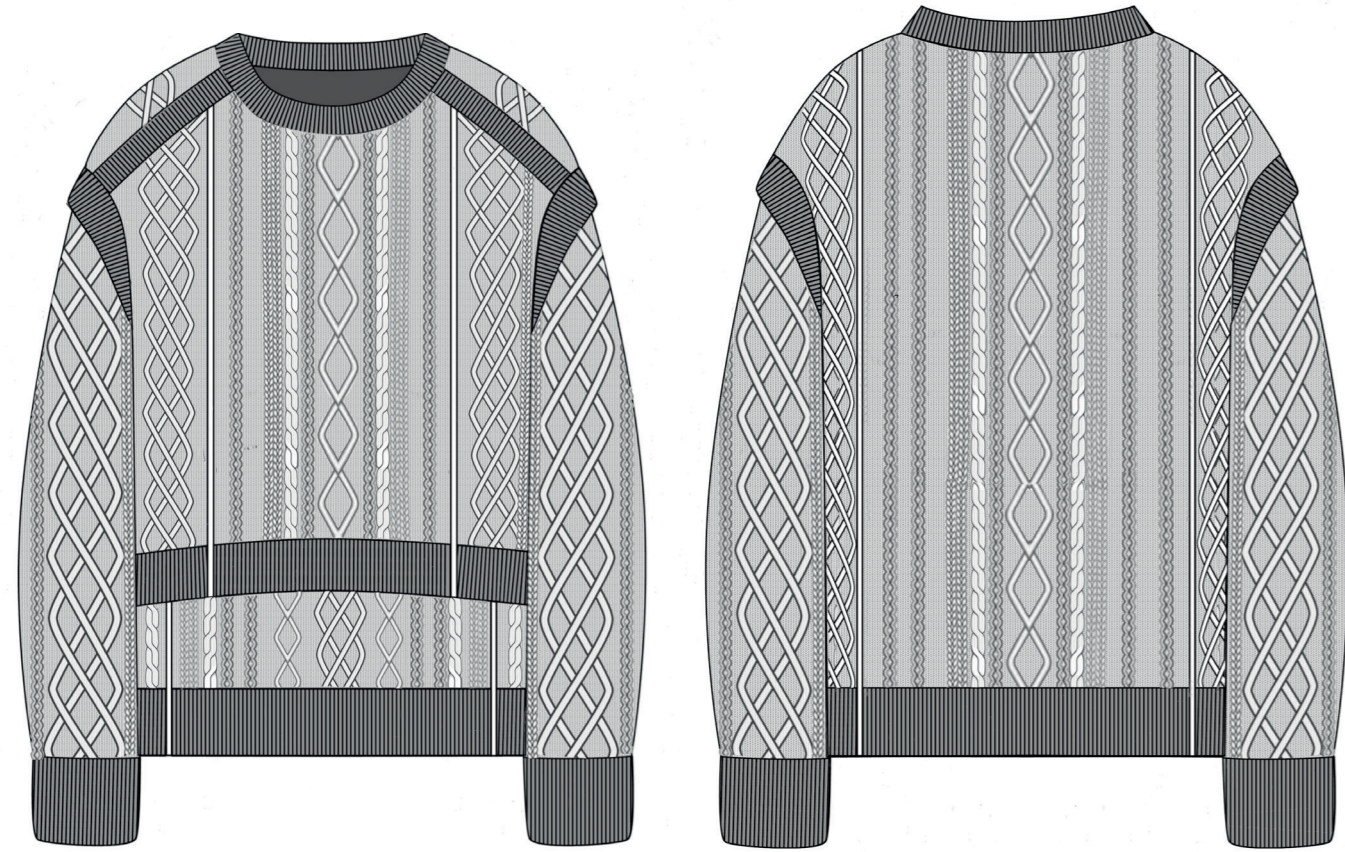
**SHARI LESMES PORTFOLIO
KNITWEAR - JERSEY**

DIOR

DIOR

PROJECT BY SHARI LESMES





OVERSIZE CABLES CREW NECK

Two front layers, one shorter than other.
A mix of purl, cables and braids.
For linking panels using a tubular to connect each panel
Ribs 2X2
Cashmere
Gauge 7



DIOR



COMERCIAL VERSION

A mix of purl, cables and braids.
For linking panels using a tubular to
conect each panel
Ribs 2X2
Cashemere
Gauge 7

DIOR



WEAVING IN CREW NECK

A vanise jacquard with weavig in.
Monofilament and silk
Gauge 14
Cuffs have a second bottom cuff
which is only linked in the center.
Ribs 1X1 only in silk

DIOR

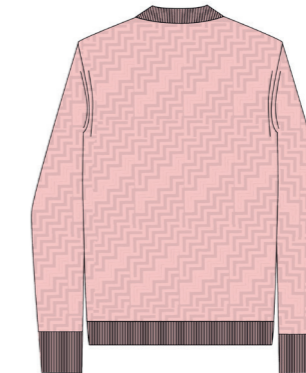
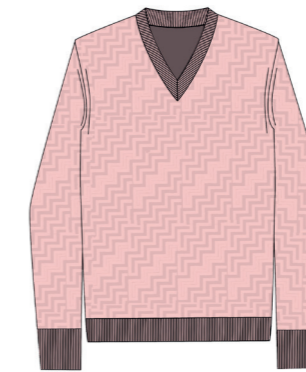
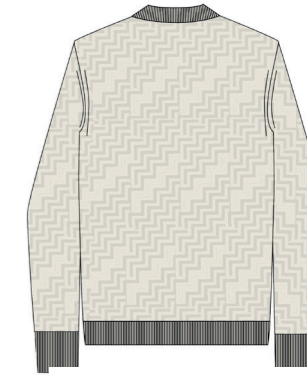
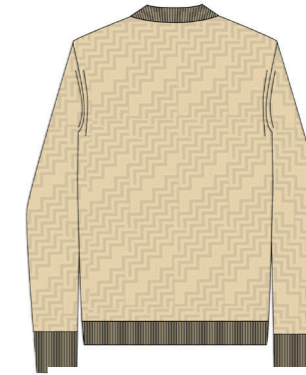
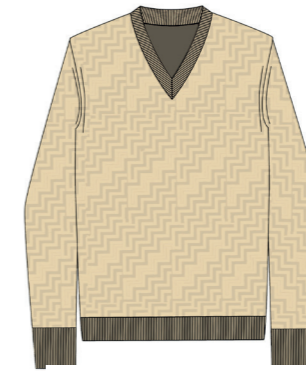
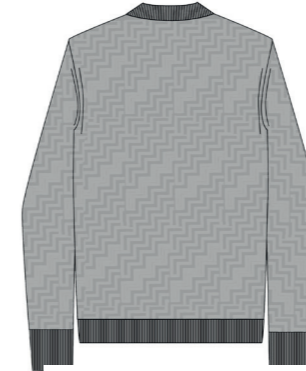


COMMERCIAL VERSION

V-neck Jumper

Jacquard with a similar motif
using different textures of yarns with a
slightly different tone
Cashmere and Wool
Gauge 5
Ribs 2X1

DIOR



Acne Studios



Spring Summer 2023 - Knitwear and Jersey Assisant

General concept of this season was based around
all related to a wedding.

moodboard starting research for the spring summer 2023
picture on top: devon wearing skirt and dress I worked on



HAIRY AND LYCRA VEST



**Sample made with partial knit
exploring the front and reversed of the technique**

WOOL CARDIGAN, TOP AND SKIRT



white cardigan is crafted from lightweight wool with a hairy semi-sheer appearance and soft hand-feel.





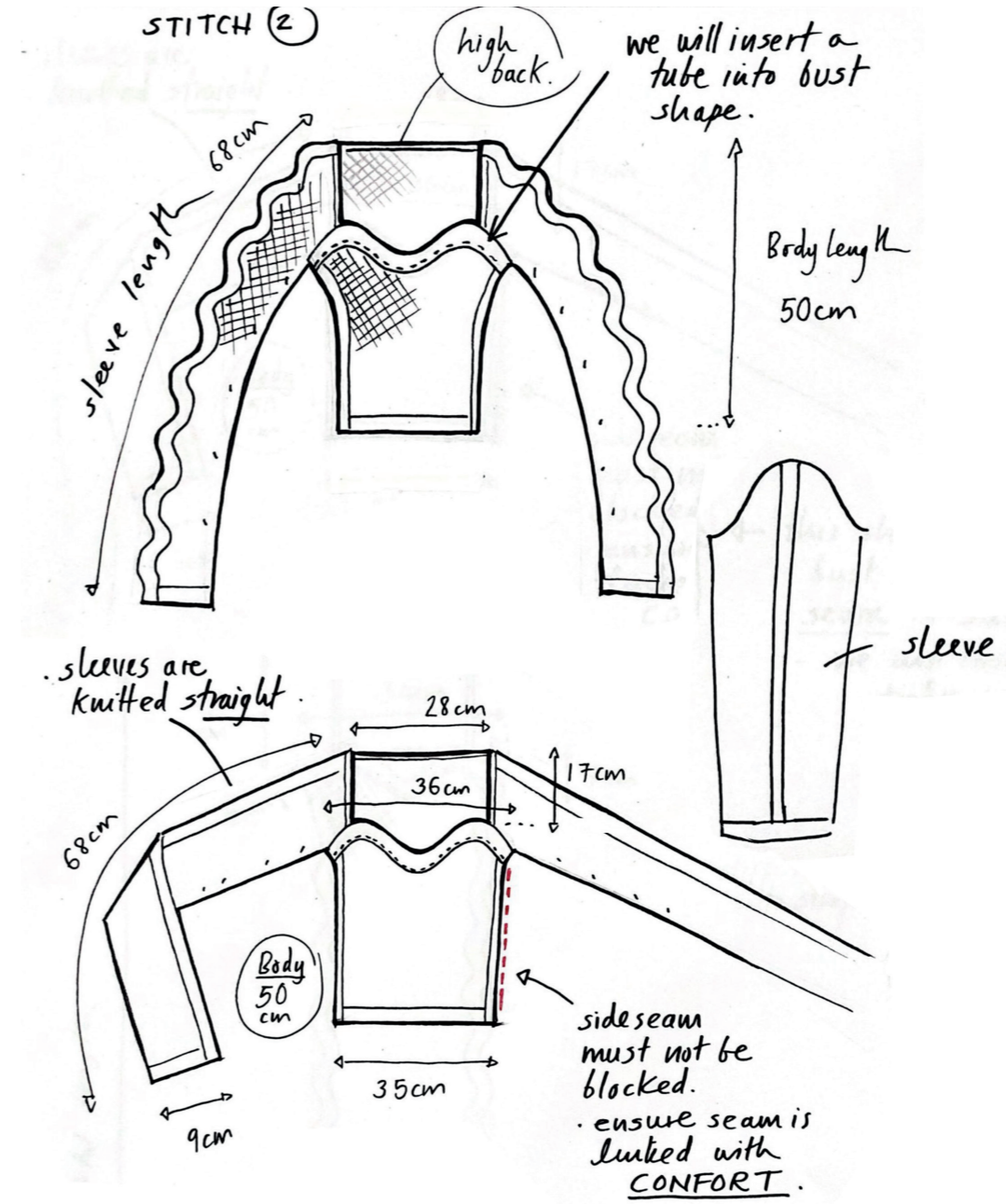
Fitting of draped tops and skirt with wire inside tubular chanel



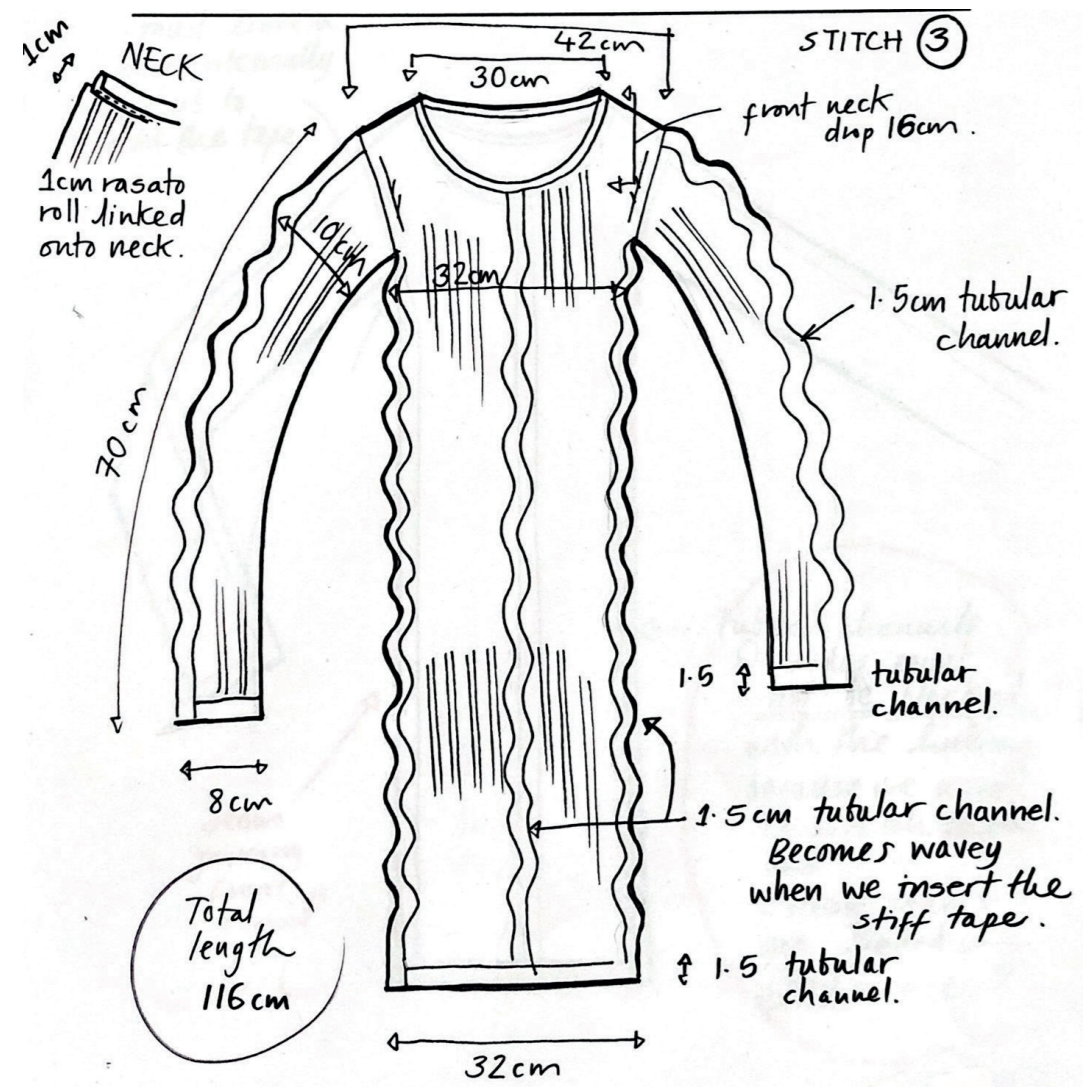
Adorned with a malleable wired curved neckline and placket. Complete with a button-up front closure. cut to a fitted fit and below waist length.



STRECH MESH SAMPLES



This page. Samples made by nylon and elastane with mesh technique and tubular channel in the middle



FIRST TRIALS OF EXPLORATION WITHIN RESPONSES OF RESEARCH



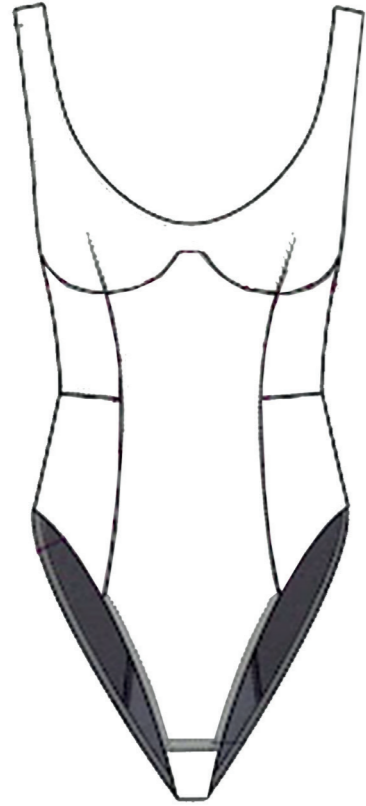


Cardinal red blouse features a heart with pleated details, draped sleeves and layered construction on the back.





**Black body is crafted from brushed fleece with a faded finish.
Detailed with side panels, elasticated details on the side.**

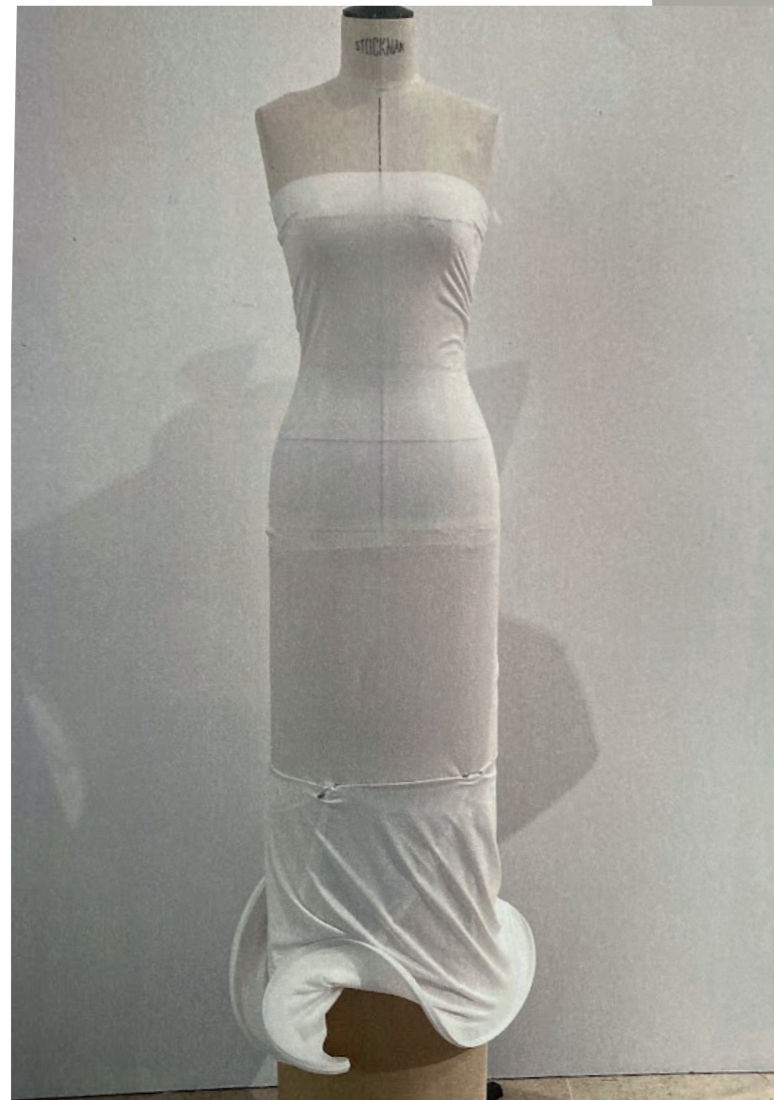


PANELLED DRAPED PROCESS



Acne Studios

JERSEY MANIPULATION

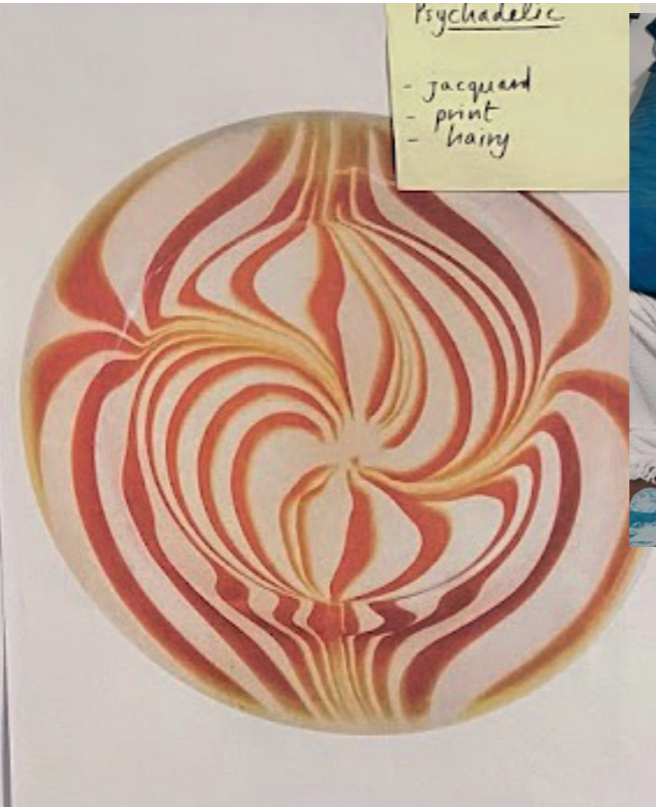


Exploring the movement of jersey through stretching, twisting and adding other components



PSYCHEDELIC RENDERING

Artwork rendering into possible print or jacquard



Psychedelic
- jacquard
- print
- hairy



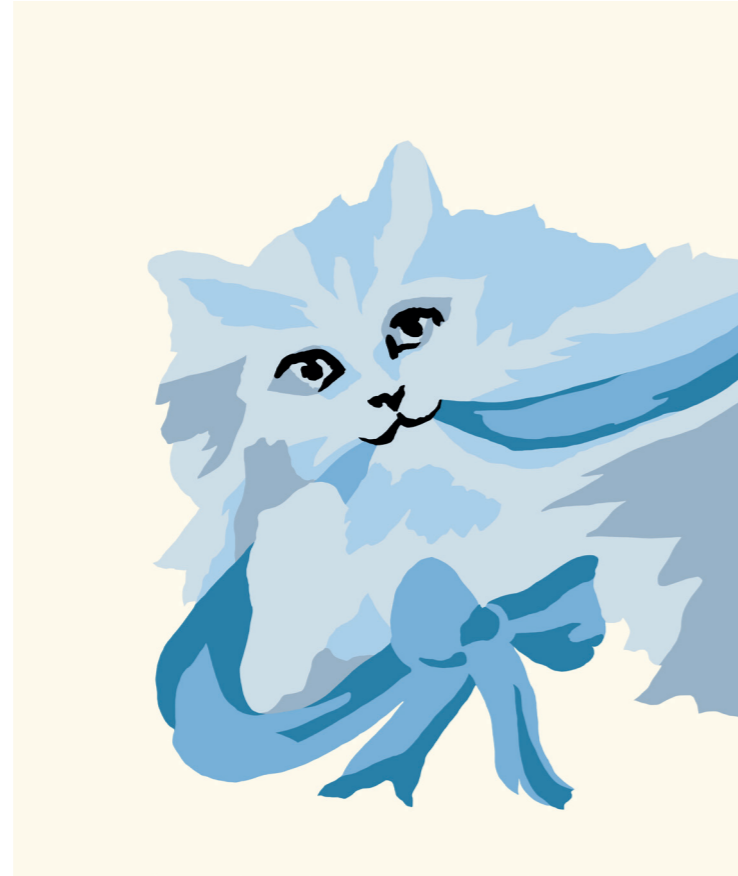
CAT ARTWORK INTARSIA

KIRA SS23

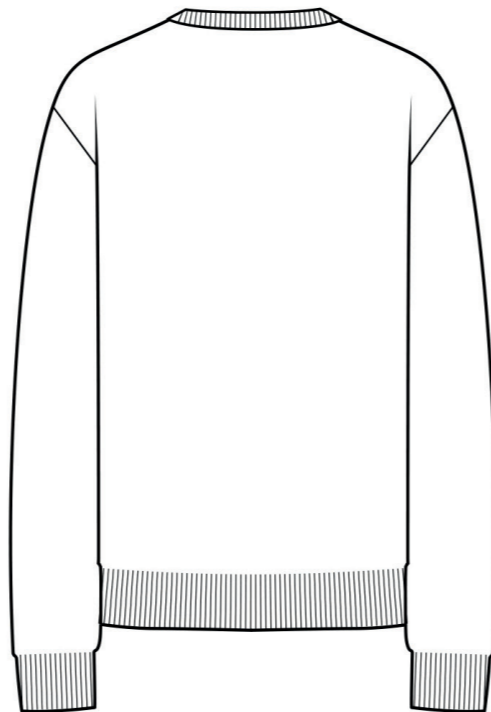
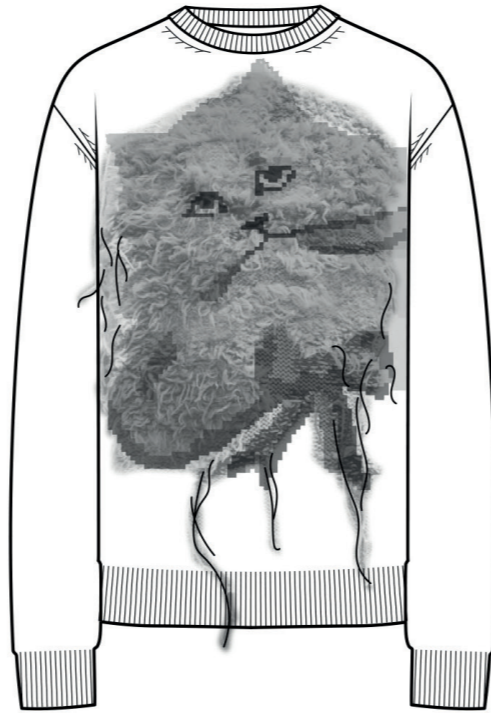


FIRST TRIAL SAMPLES WITH DIFFERENT ARTWORK

Looking at the reversed of intarsia

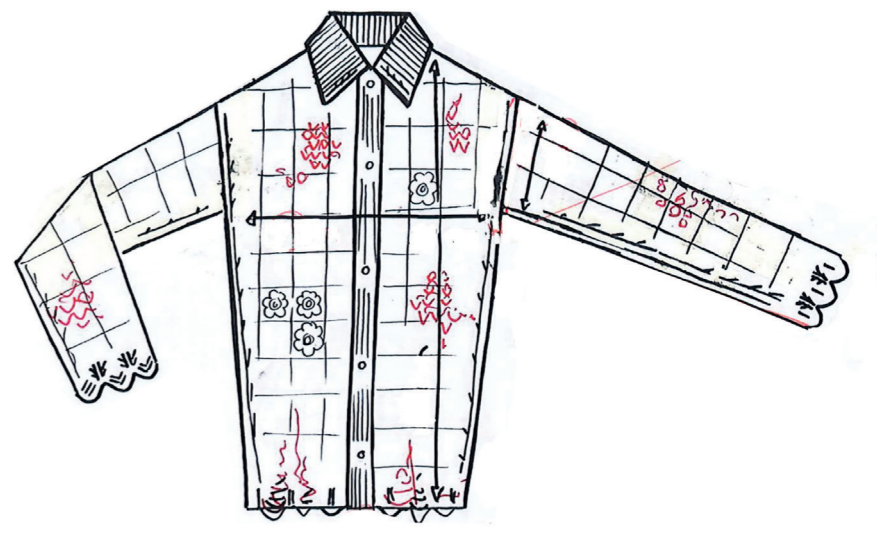
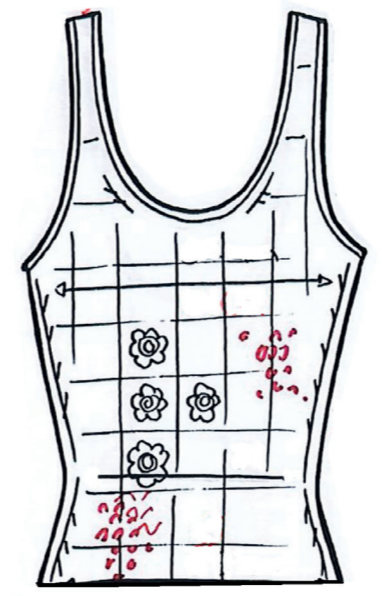
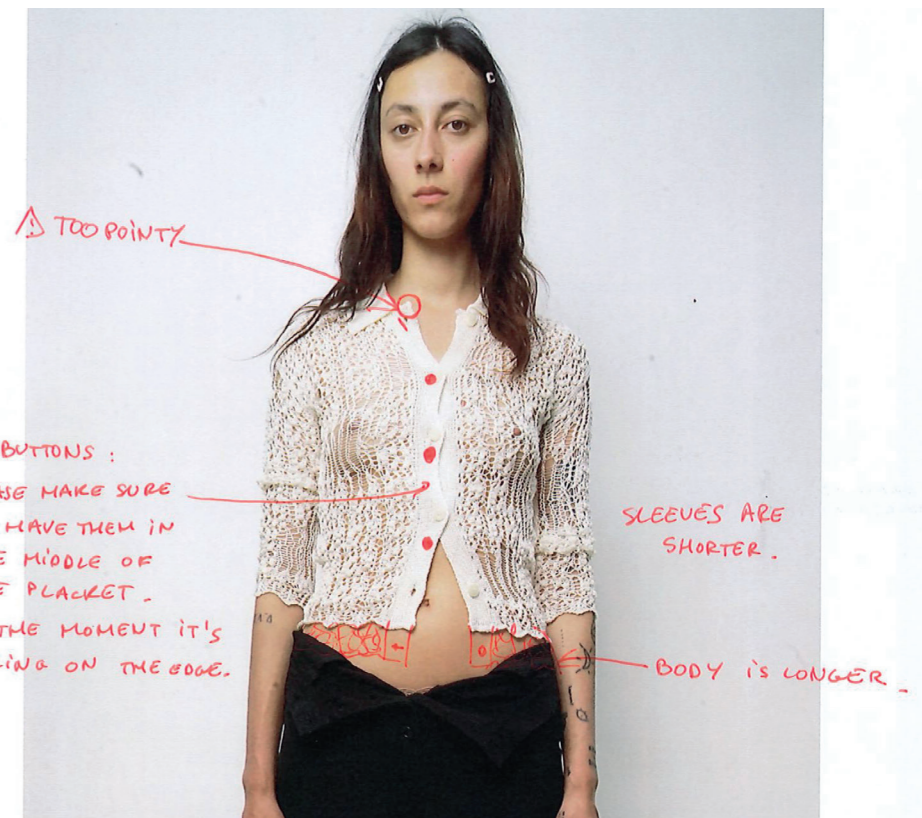
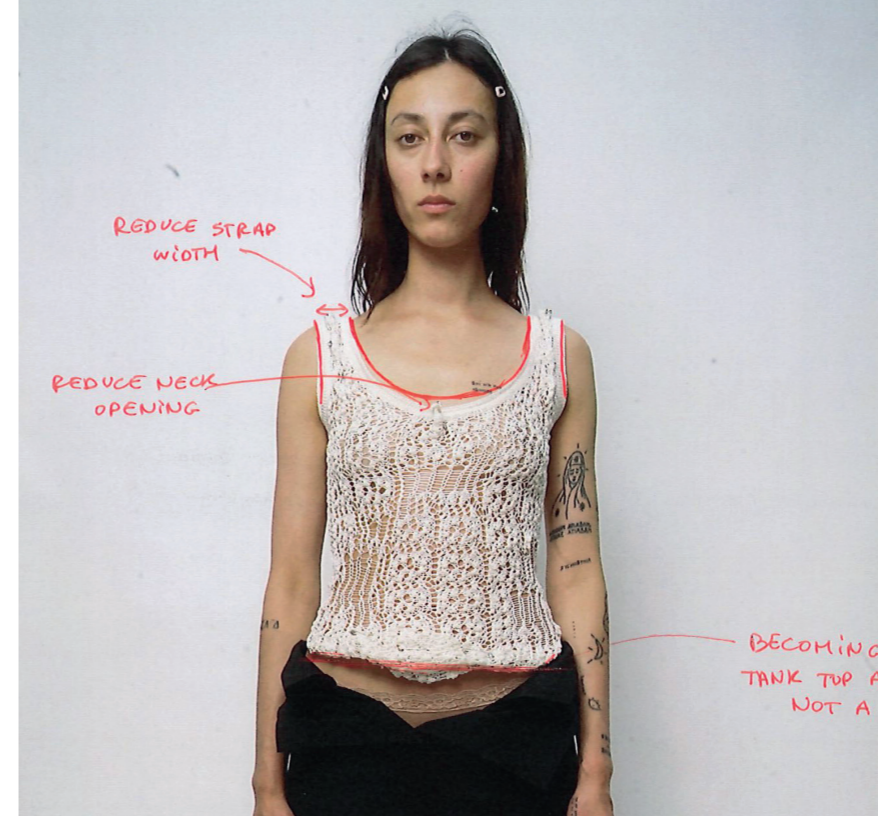


FINAL ARTWORK



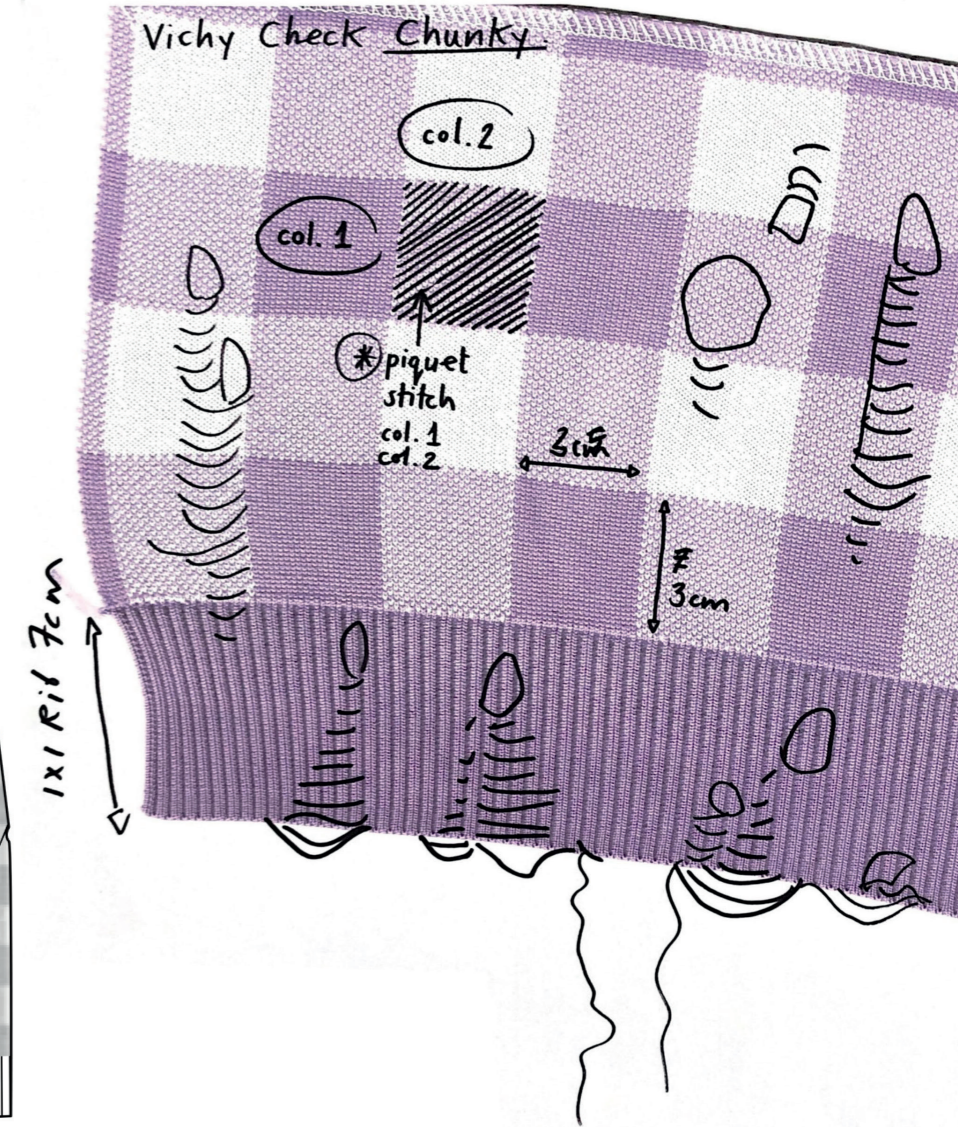
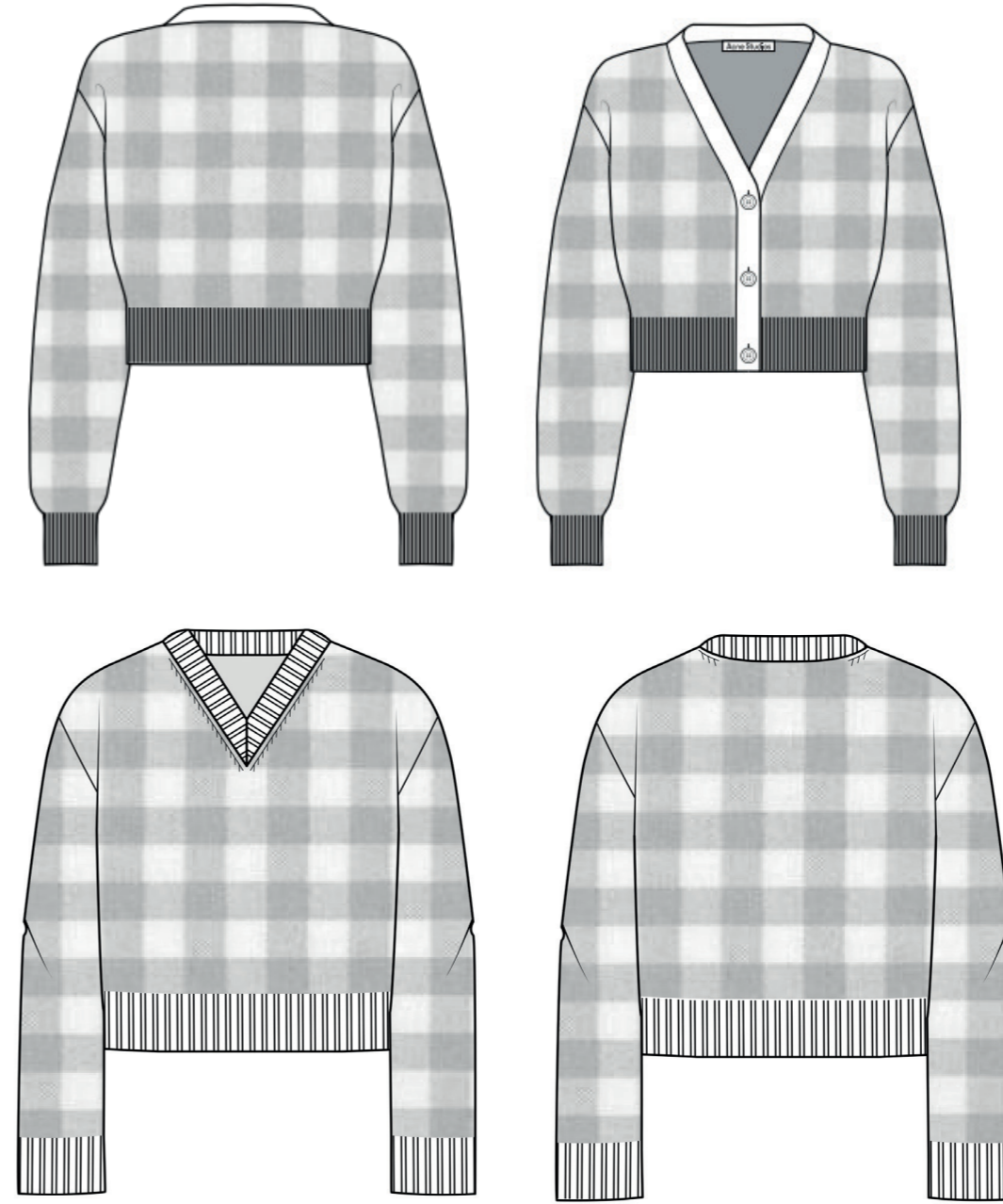
OPEN POINTELLE

stitch with irregular ladder details and cut to a fitted silhouette.





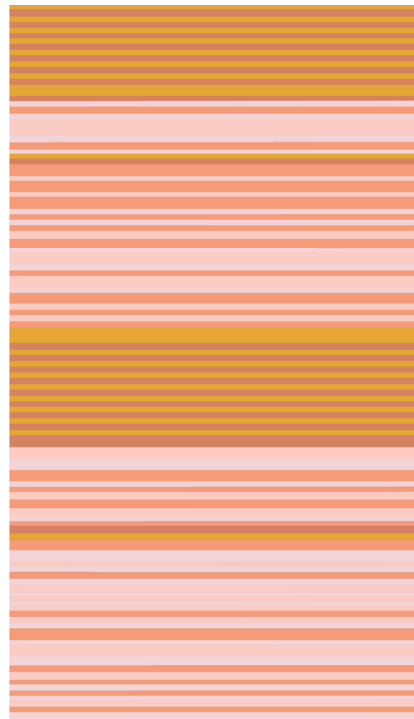
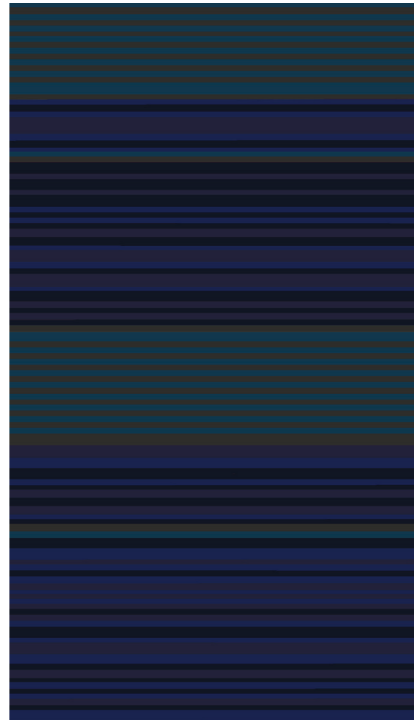
VICHY



Gingham pattern and is crafted from an open knit mohair wool blend.

Acne Studios

ALL OVER STRIPES



FINAL ARTWORK
Exploring Diferrent Colour
Ways



PROTOTYPES

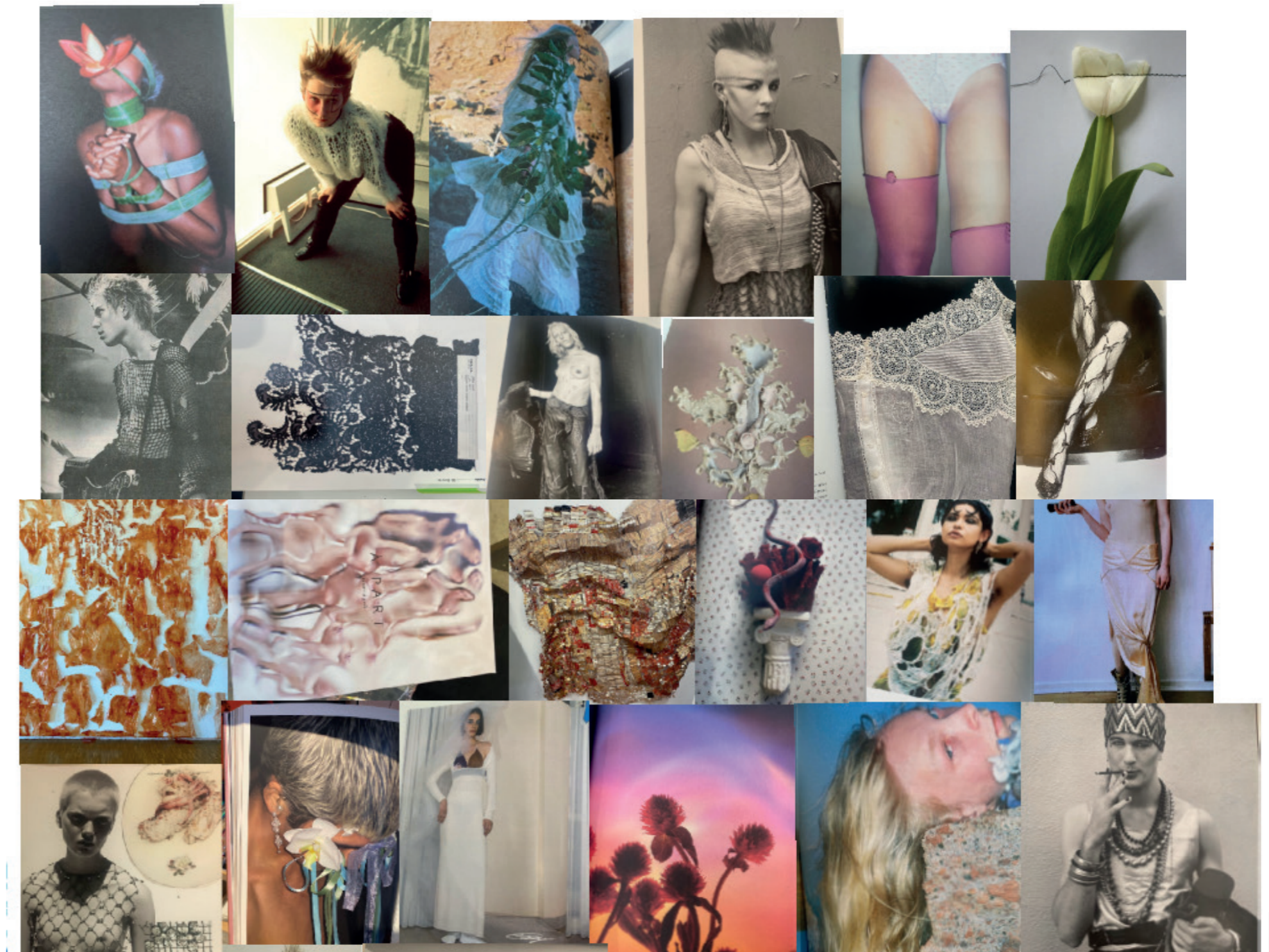




Les Fleurs Studios

Knitwear Designer 2022 - Current Position

This is a sustainable project that I have worked in collaboration with the creative director Maria Bernard, the idea of the brand is to create zero waste pieces that come together by recycled materials and upcycling techniques.





In this page the sample of recycle cotton rib and cotton fiber crocheted.

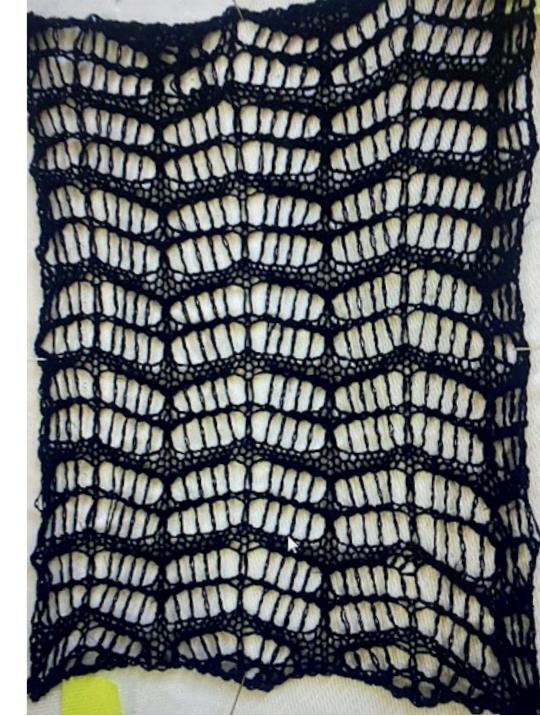
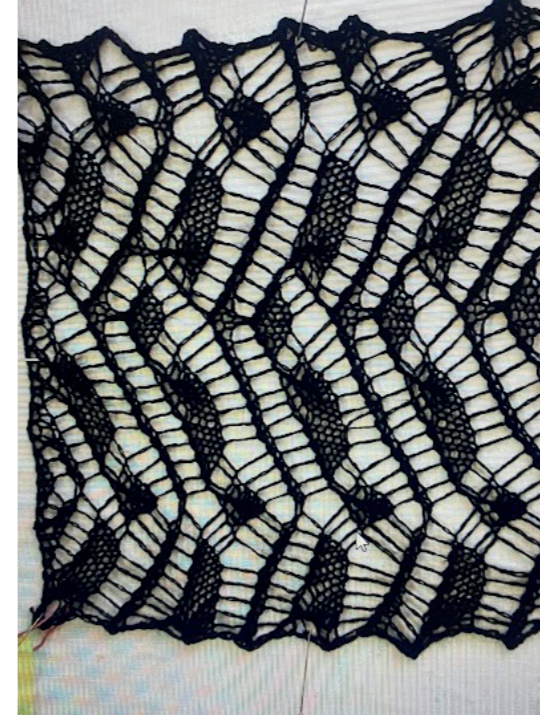
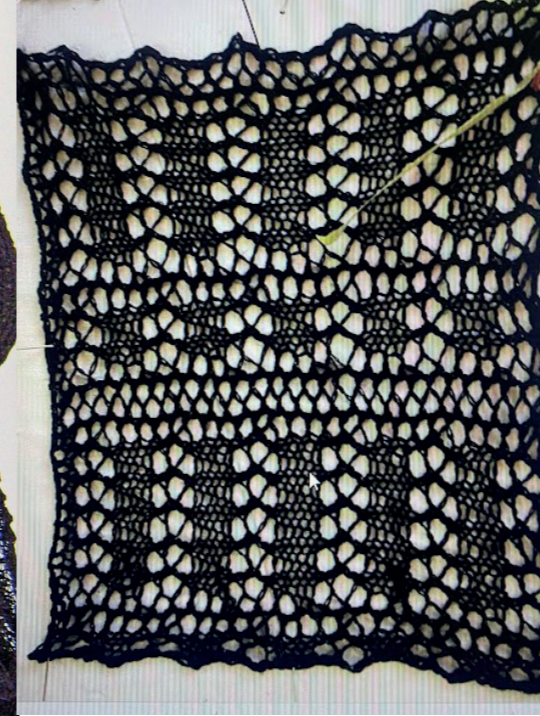
Left page picture of wool dress and gloves distressed with open holes featured in Sick Magawine 2022



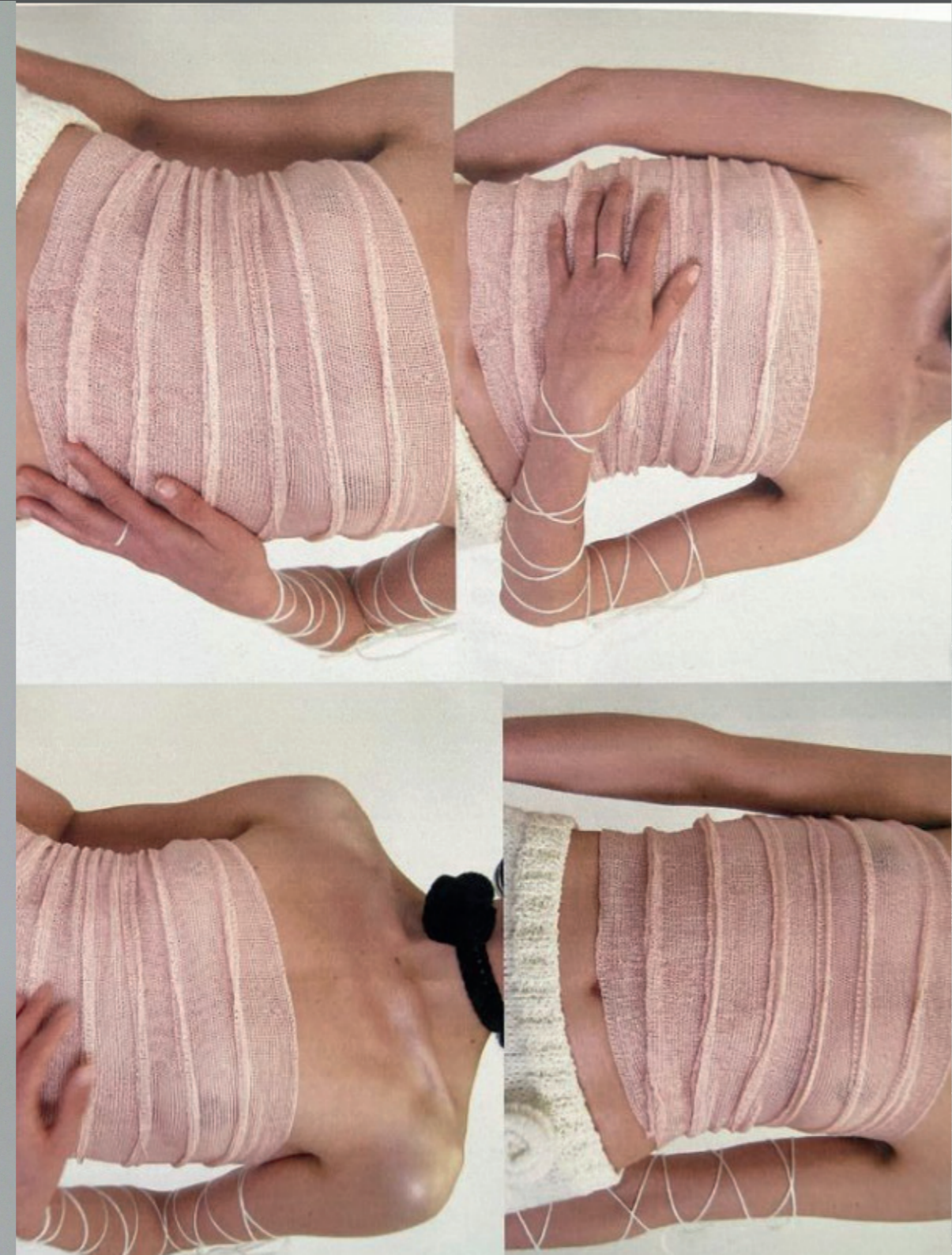




knit development of mesh of different mesh techniques material I used was recycled cotton.





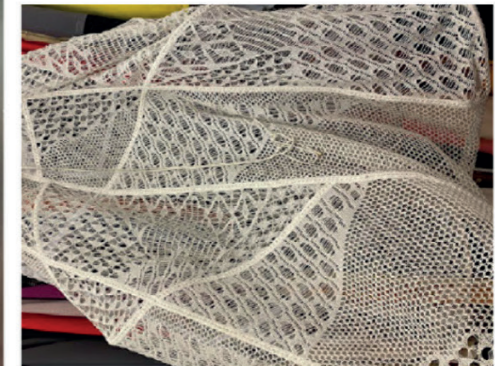
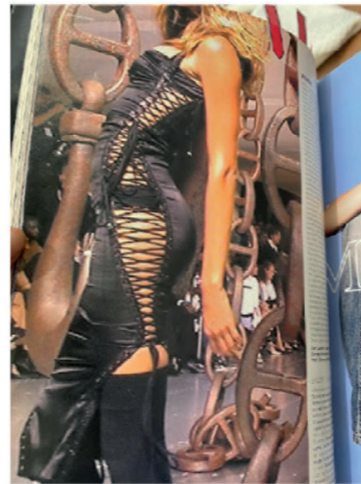
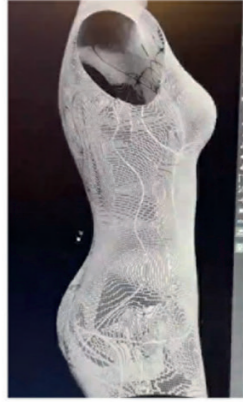
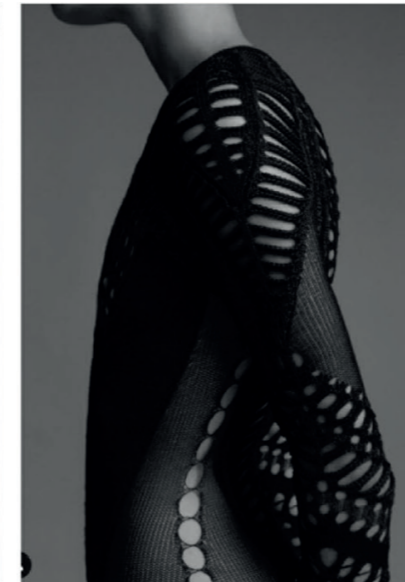


DION LEE

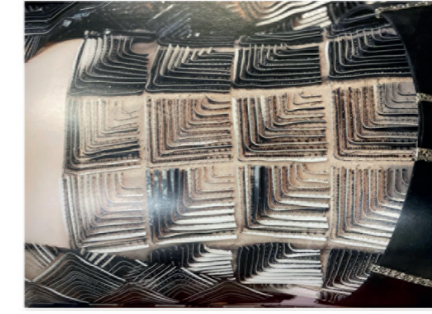
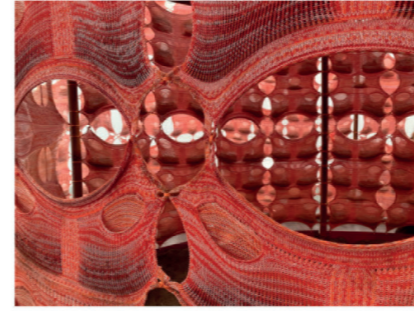
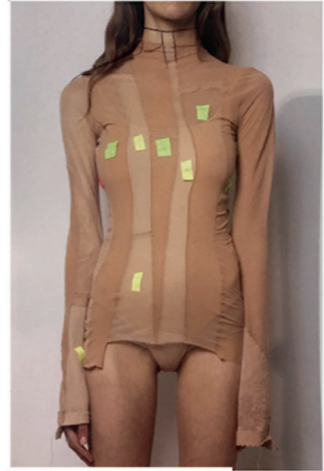
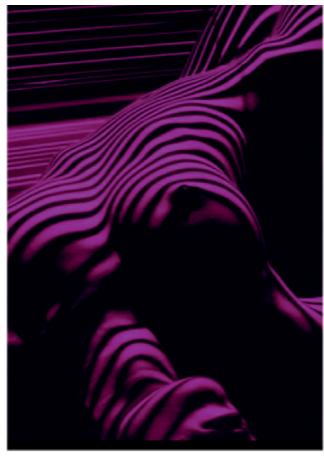
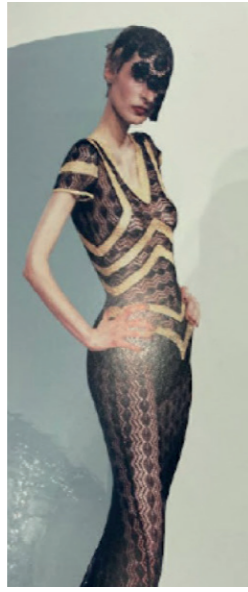
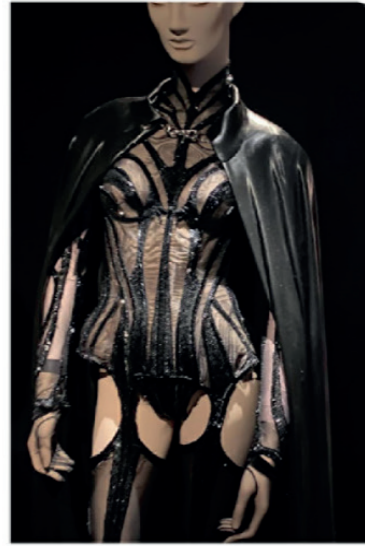
DESIGN PROJECT BY:

SHARI LESMES

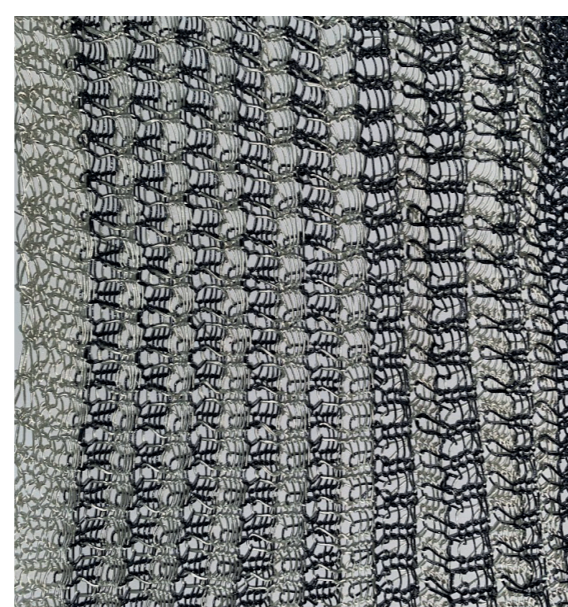
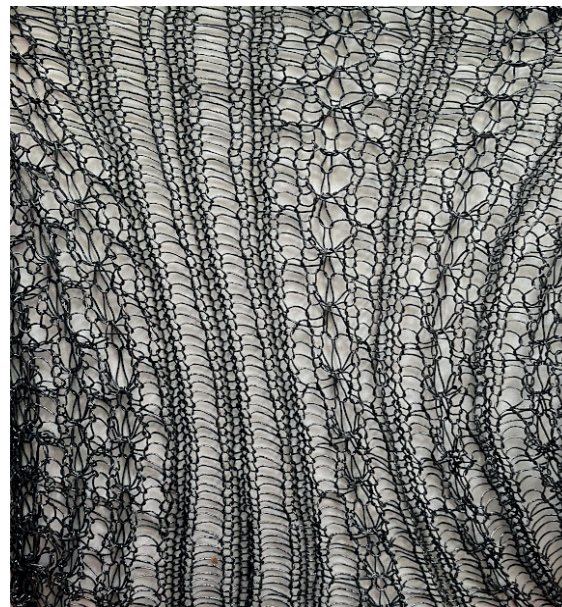
INTELLIGENT SEXUALITY



DION LEE



SWATCHING DEVELOPMENT -
Techno Yarn Nm 1/5



STAND WORK WITH TECHNIQUE





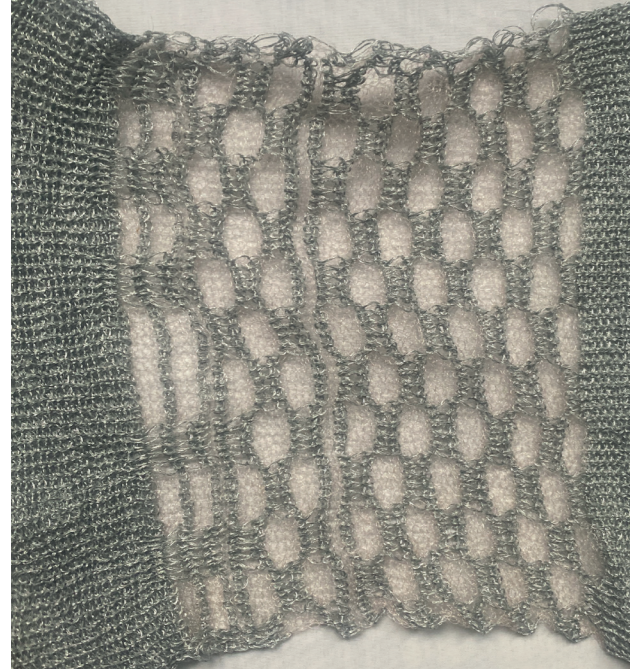
SWATCHING EXPERIMENTATION
Lycra



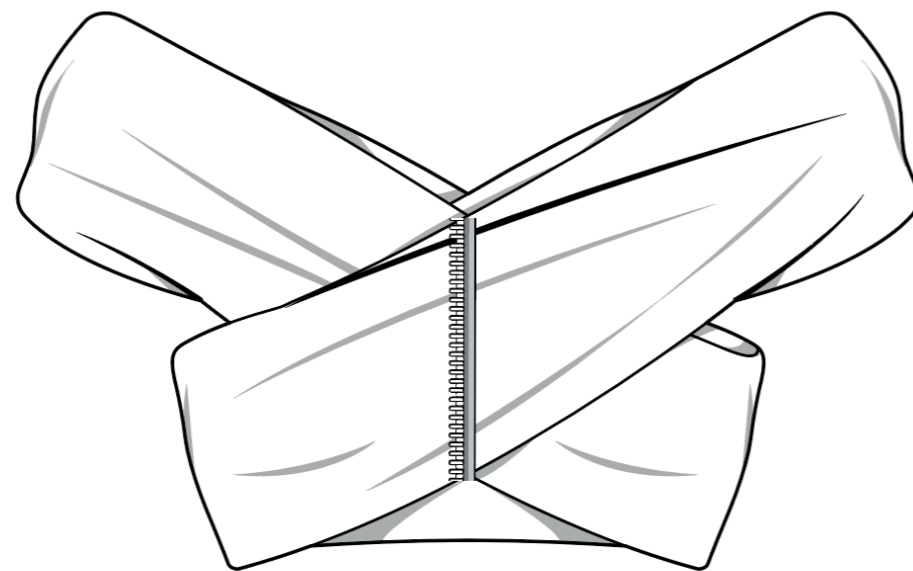
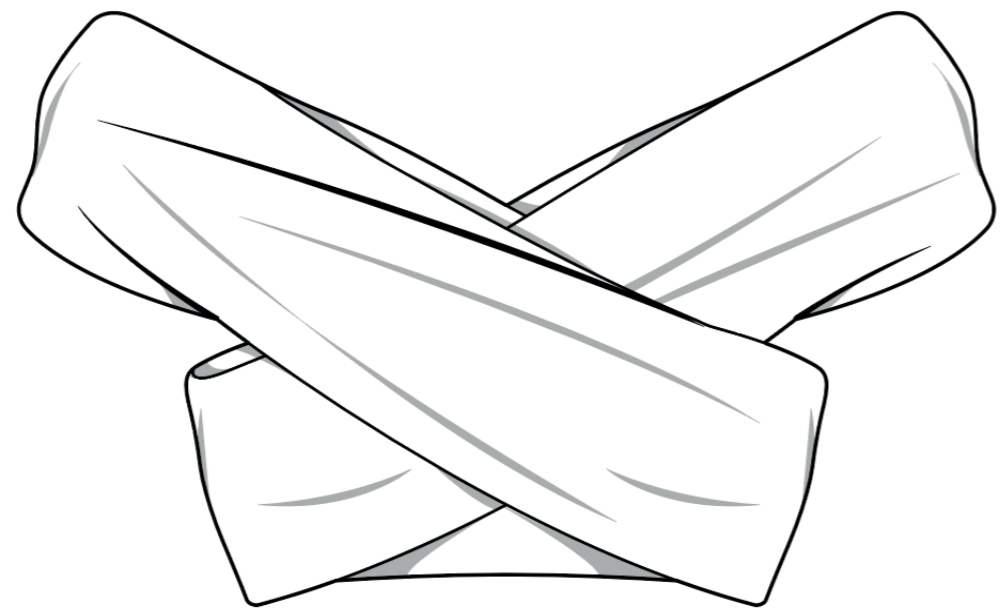
SWATCHING EXPERIMENTATION
MIX BETWEEN YARNS



SWATCHING EXPERIMENTATION
BUTTERFLY AND CELLULOIDE







paco rabanne





SPINNER : INTIFIL

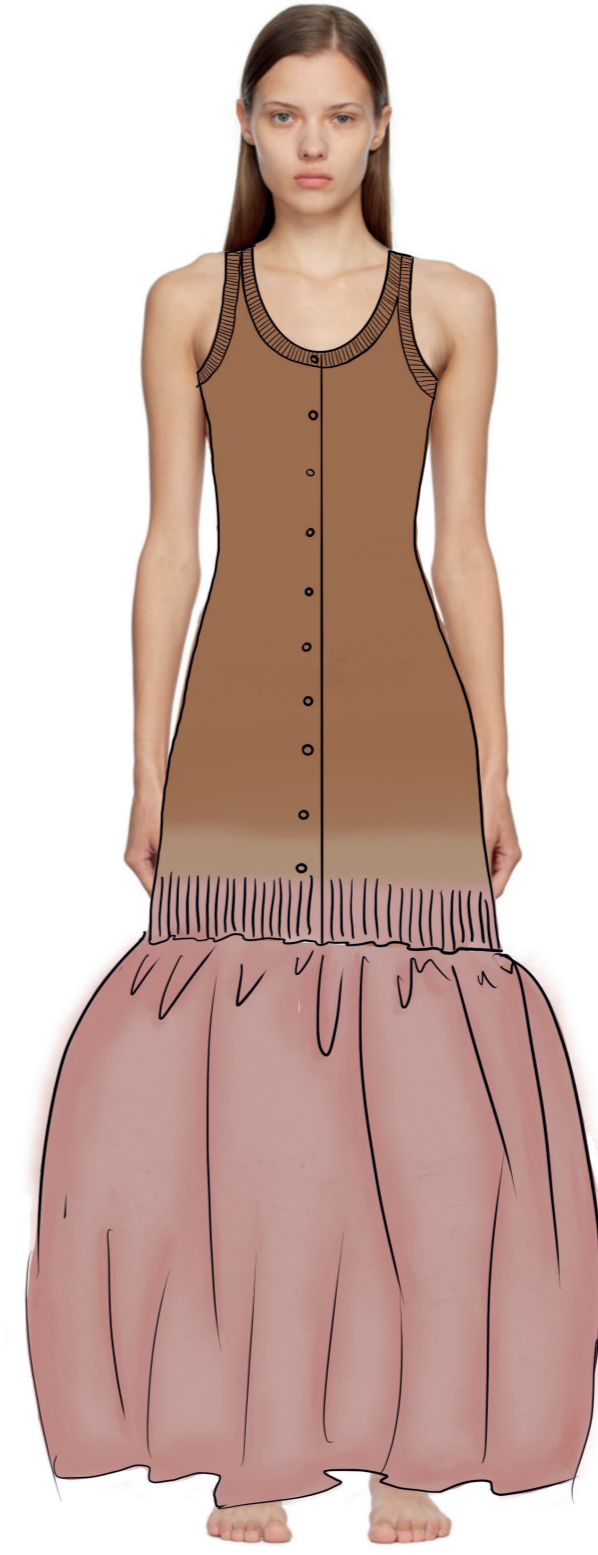
COMPOSITION

74% Suri Alpaca /
22% Merino Wool (21 mic.) /
4% Polyamide

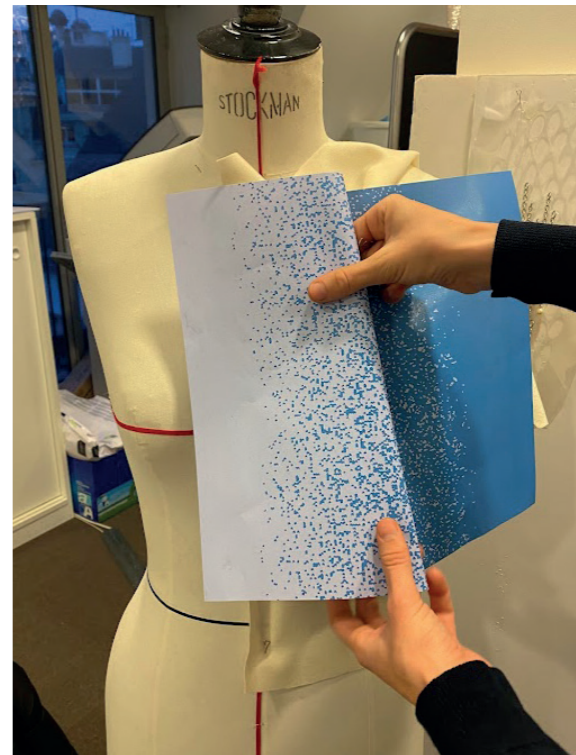
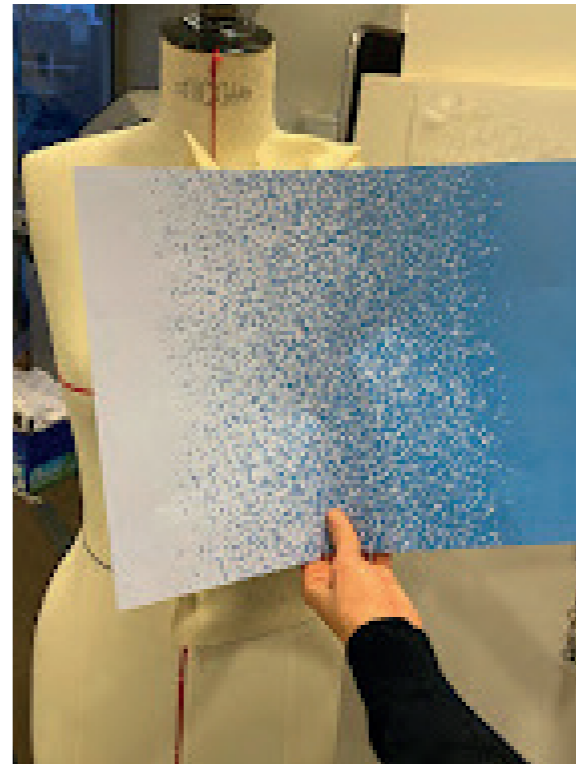
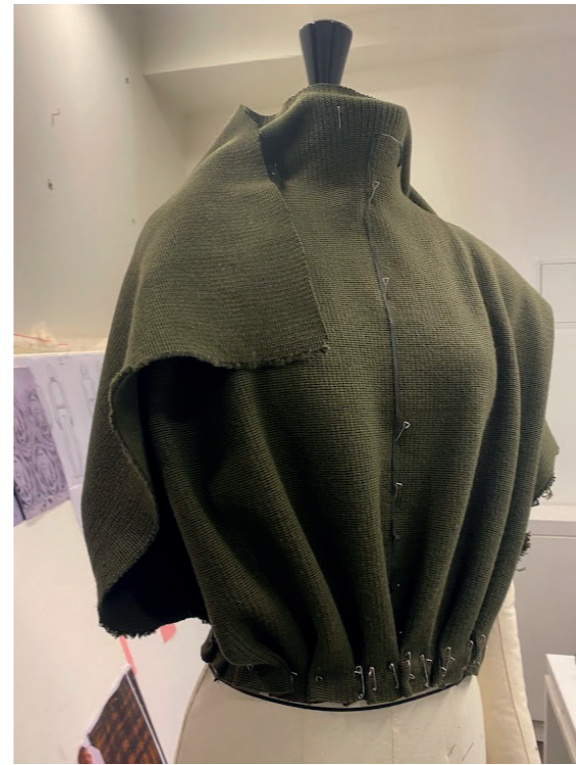
COUNT NM
1/2.6



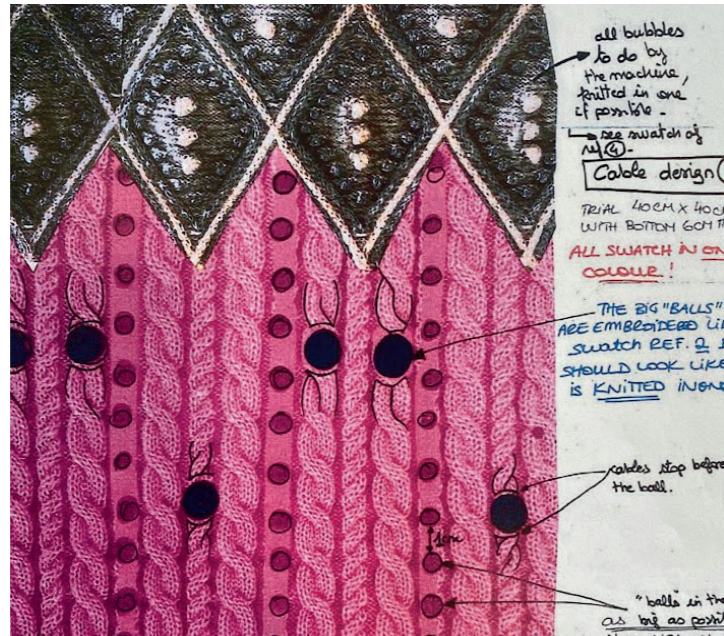
paco rabanne

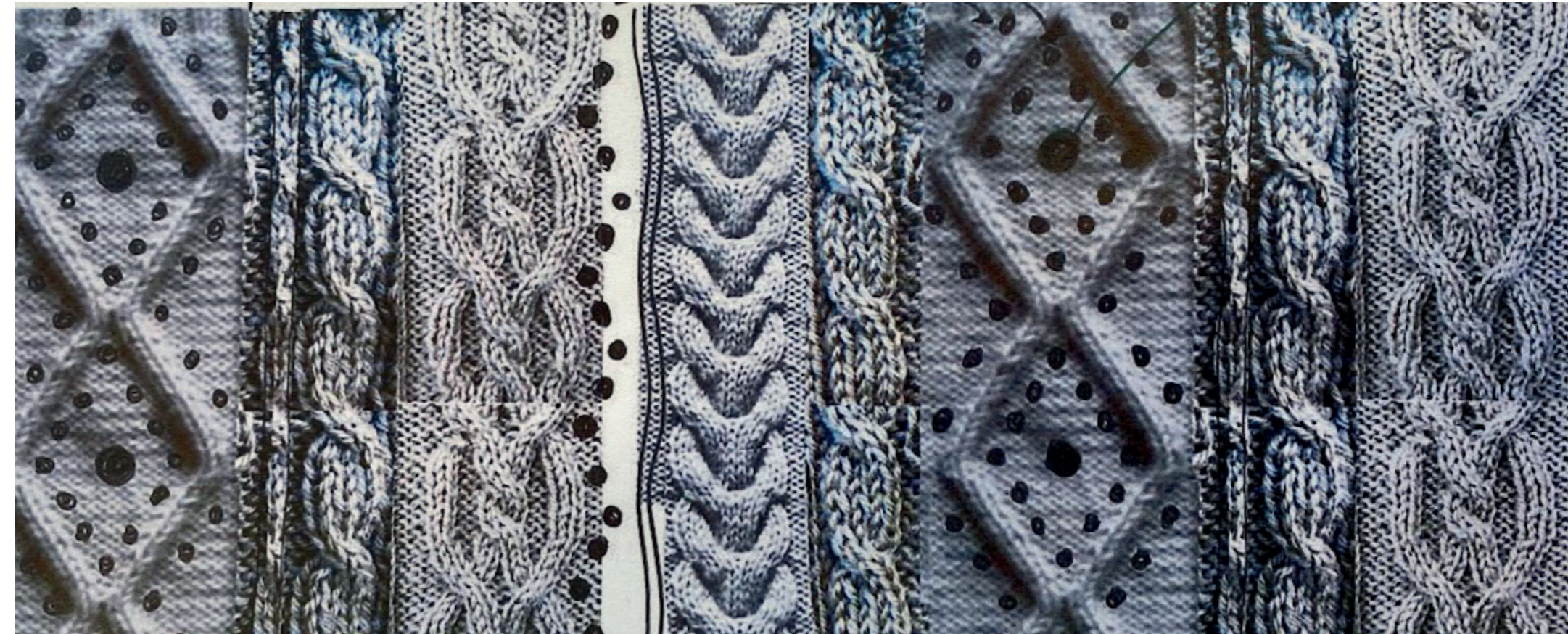
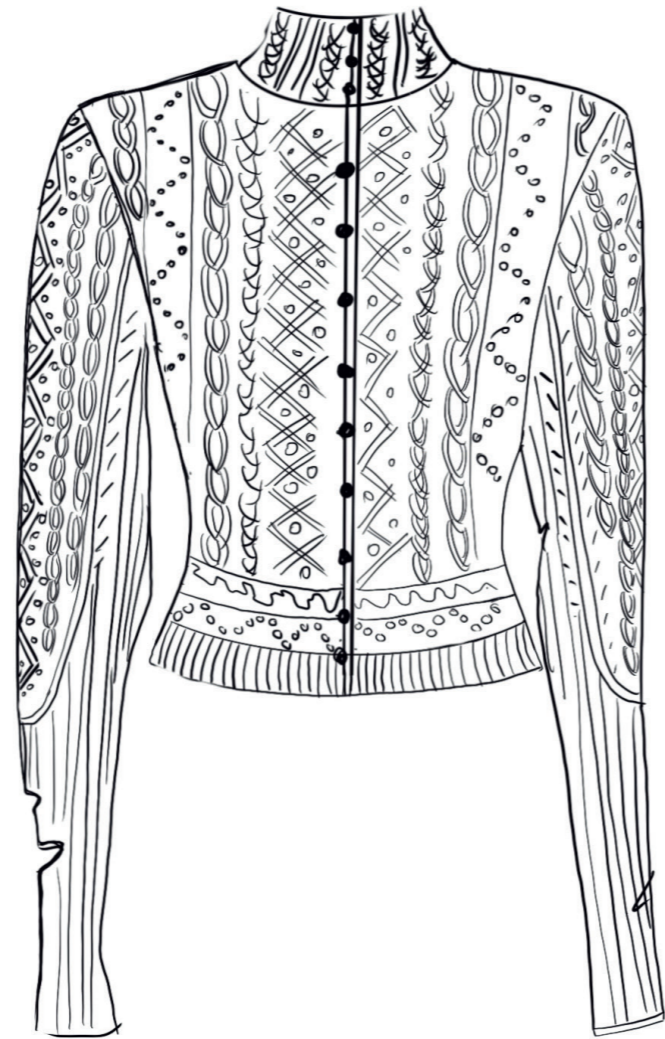


paco rabanne



paco rabanne





This page: Cables and proposition of bubbles and outline in knit, made by cashmere
opposite page: declination of the cable top and renderings of the sketch proposition